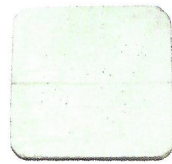
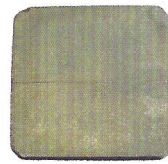


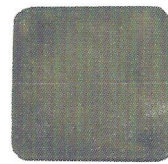
Smith's COLOR FLOOR & COLOR WALL



White
CF/CW-100



Natural
CF/CW-110



Antique Gray
CF/CW-120



Gray
CF/CW-130



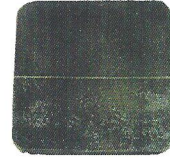
Black
CF/CW-140



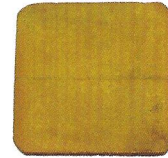
Patina
CF/CW-160



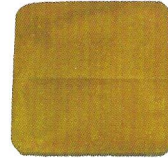
Moss Green
CF/CW-170



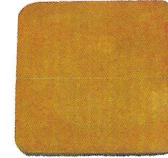
Olive Green
CF/CW-180



Yellow Ochre
CF/CW-200



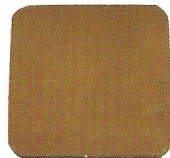
Sandstone
CF/CW-210



Pottery
CF/CW-220



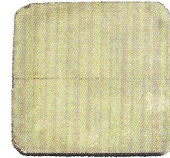
Mauve
CF/CW-225



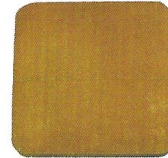
Terra Cotta
CF/CW-230



Mars Red
CF/CW-240



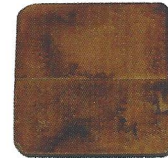
Desert Sand
CF/CW-250



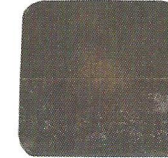
Light Adobe
CF/CW-260



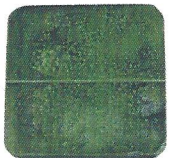
Dark Adobe
CF/CW-270



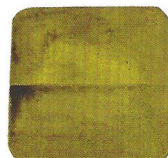
Bark Brown
CF/CW-280



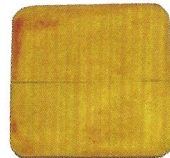
Dark Chocolate
CF/CW-290



Sea Foam
CF/CW-560



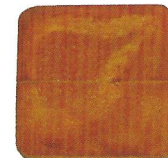
Loden
CF/CW-570



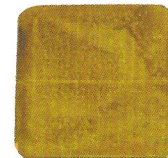
Honey
CF/CW-600



Amber
CF/CW-630



Red Clay
CF/CW-640



Fawn
CF/CW-700



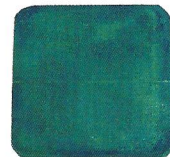
Nutmeg
CF/CW-710



Purple
CF-900



Ocean Blue
CF-910



Deep Aqua Green
CF-920



Green
CF-930



Yellow
CF-940



Orange
CF-950



Red
CF-960

Classic Series
(Semi-transparent)

Old World Series
(Transparent)

Bright Lights Series
(High Chroma)



Smith Paint Products
www.smithpaints.com

These plaques are representations of the actual stain colors.

Smith's COLOR FLOOR

is a water-based extra-strength stain developed to achieve a decorative natural appearance on concrete floors and other porous mediums.

It is an excellent tool for the decorative concrete market that can produce unbelievable works of art. Formulated as a user-friendly alternative to hazardous solvent and acid-based stains, Smith's Color

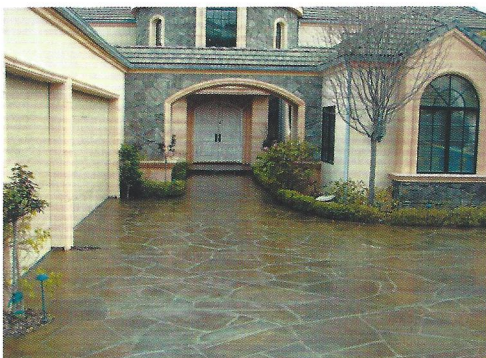


Floor utilizes state of the art pigment preparation and new acrylic polymer research to ensure the highest quality results. The stain adheres to a variety of surfaces including, but not limited to, interior and exterior concrete, brick, plaster, and natural stone. Thanks to its superior adhesion, Smith's Color Floor can be applied to previously sealed surfaces, thus allowing an applicator to save jobs with little hassle. In addition to the Classic Series (semi-transparent stains), Smith's Color Floor is available in Old World Series (transparent stains), Bright Light Series (high-chroma stains) as well as Smith's Color Accents for metallic, iridescent, pearlescent and flip-flop colors.

Smith's Color Floor can be applied via airbrush, high volume low pressure (HVLP), airless sprayer, production gun, pump-up sprayer, sea sponge and traditional bristle brush. For best results, create a "mist" of Smith's Color Floor on the intended surface. A variegated finish is achieved through the various absorbencies of the surface material as well as the differing specific gravities of the color pigments. Therefore, the application of several coats or the use of a roller applicator results

in a more monotone appearance or painted look. Concrete sealer is recommended to extend the

stain's longevity. Smith's Color Floor is compatible with single and two component epoxies, urethane, solvent and water-based sealers. Smith's Color Floor is not compatible with Methyl Methacrylate based sealers. In addition, "penetrating" (e.g. sodium silicate) sealers will not penetrate Smith's Color Floor, thus will not provide any protection.



Highlights

- Water Submersible
- Fast Air Dry
- Weather Resistant
- Alkali Resistant
- Ultra Violet Light Resistant
- Low Odor
- Overnight Deliverable – No Red Label
- Colors are intermixable
- Custom Color Matching*

* Available with predetermined order size.